

Friedrich® Hybrid Electric Heat Pump Water Heater – Residential Utility

Designed to Reduce Energy Demand

Product Highlights

- 3.50 UEF
- Meets NEEA Tier4 Requirements
- Built-in Wi-Fi powered by EcoNet® Technology
- California Title 24 Compliant (JA13 Ready)
- Demand Response Ready with Built-in EcoPort™ (CTA-2045 port)
- 10 Year Limited Warranty¹

QUALIFIES FOR UTILITY REBATES³



New! Top Connections and Duct Ready Design

FEATURES & BENEFITS	
High Efficiency	Meets ENERGY STAR® requirements
	High-efficiency cost savings for the homeowner
Easy Installation	Easily Ducted – for installation in confined spaces with minimal make up air required
	Easy access to side water connection and top electrical junction box; Zero clearance required in the back or side of the unit
	¾" NPT water inlet & outlet; ¾" condensate drain connections
Available EcoNet® Smart Technology	Same footprint as a standard electric tank
	Built-in Wi-Fi ²
	Energy usage reporting and Time-of-use scheduling
	Easy connection to utility demand response / load management programs

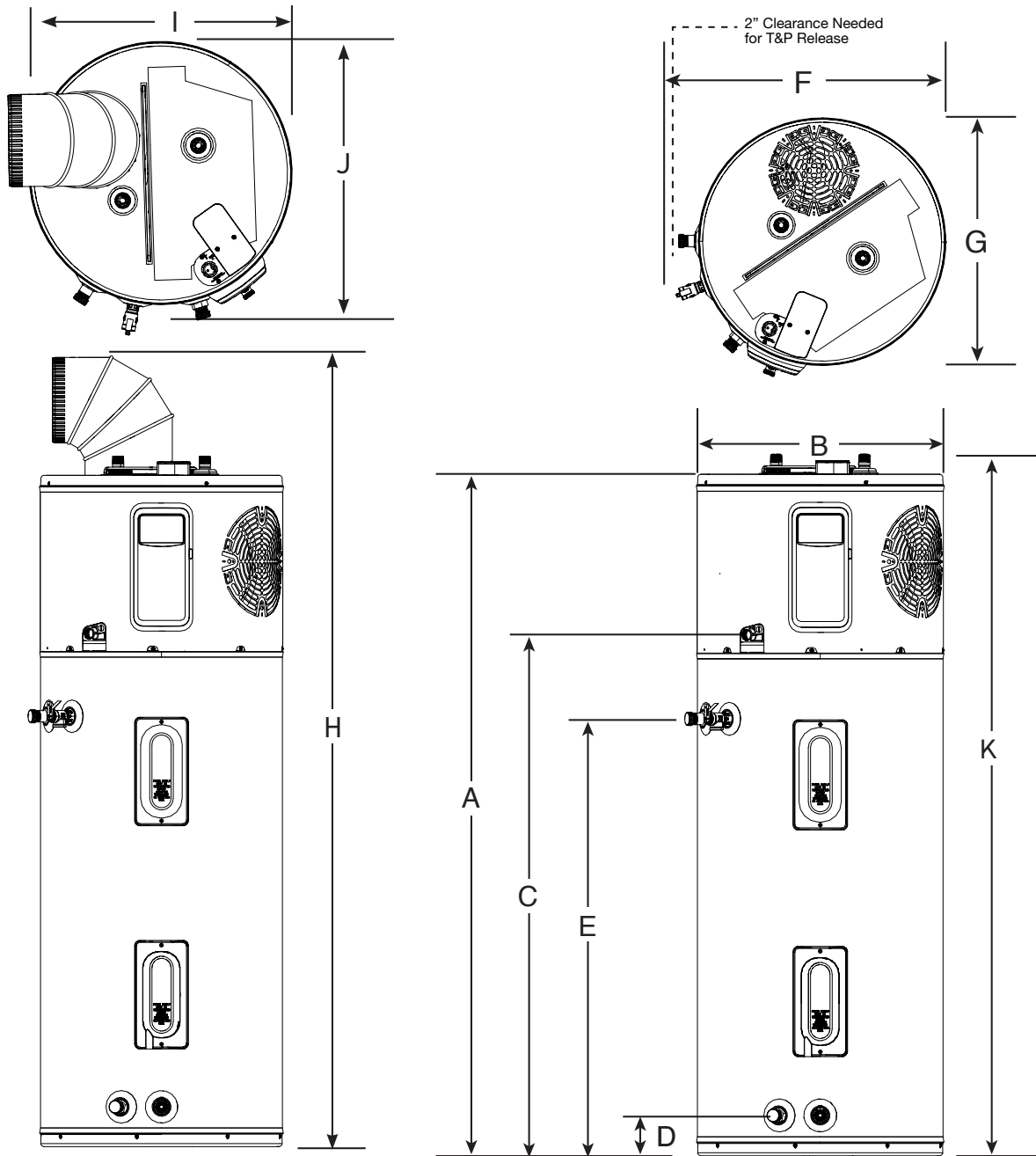
Hybrid Electric Heat Pump - Utility
40, 50, 65 and 80-Gallon Capacities
208-240 Volt / 1 PH / 24 Amps



DESCRIPTION		ENERGY INFO.			FEATURES					
NOMINAL GALLON CAPACITY	RATED GALLON CAPACITY	MODEL NUMBER	MODEL VARIANT	ELECTRIC BREAKER SIZE	UNIFORM ENERGY FACTOR (UEF)	COMPRESSOR BTU/H	UEF FIRST HR. RATING G.P.H.	RECOVERY IN G.P.H 90° F RISE	UNIT WT. (LBS.)	APPROX. SHIP WT. (LBS.)
40	36	PROH40 T2 FD350UM	701440	30	3.50	4200	60	26	156	177
50	45	PROH50 T2 FD350UM	701439	30	3.50	4200	67	26	172	193
65	59	PROH465 T2 FD350UM	701441	30	3.50	4200	75	26	225	262
80	72	PROH80 T2 FD350UM	701442	30	3.50	4200	87	26	244	281

¹ See Residential Warranty Certificate for complete information. ² Wi-Fi broadband internet connection required. ³ Consult your tax advisor for details on eligibility requirements for any available tax credits. Rebates vary by state.

Friedrich® Hybrid Electric Heat Pump Water Heater – Residential Utility



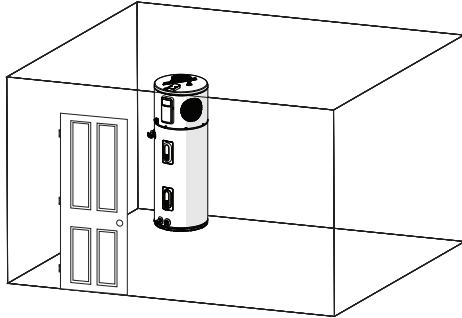
DESCRIPTION		DIMENSIONS (SHOWN IN INCHES)									
NOMINAL GALLON CAPACITY	MODEL NUMBER	A	B	C	D	E	F	G	H	I	J
40	PROH40 T2 FD350UM	63	20-1/4	47	3-5/8	39-5/8	28	24	78-7/8	22-3/8	23-1/4
50	PROH50 T2 FD350UM	61	22-1/4	47	3-5/8	39-5/8	28	24	78-5/8	24-3/8	25-9/16
65	PROH465 T2 FD350UM	64	24-1/4	49	3-7/8	42-3/8	30	26	81-1/8	26-1/2	27-3/8
80	PROH80 T2 FD350UM	74	24-1/4	59	3-7/8	52-3/8	30	26	91	26-1/2	27-3/8

Hybrid Electric Heat Pump Water Heater Installation Guidelines to Provide Optimal Efficiency

Heater: Not Ducted

Room size: Larger than 700 ft³ (e.g. 7' x 10' x 10').

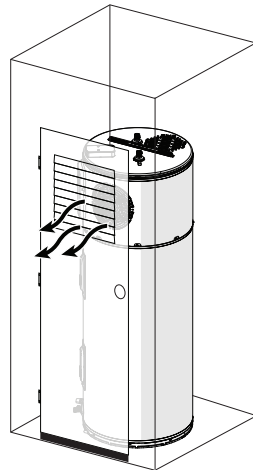
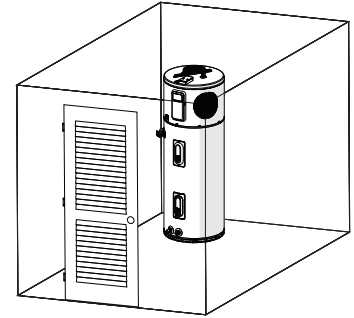
Requirements:
No additional ventilation needed



Heater: Not Ducted

Room size: Smaller than 700 ft³ (e.g. 7' x 10' x 10').

Requirements:
Full louvered door OR two louvers top and bottom¹



Heater: Not Ducted

Room: Small Closet

Requirements:

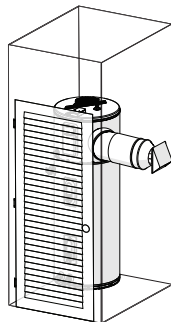
- Air gap under door equal to 18 in² (0.75" clearance)
- Louver must be located the same height on door as the air exhaust on heater
- Heater air exhaust must be positioned towards louver within one foot of door

PLEASE NOTE: For all non-ducted applications, ensure that the air exhaust vent is oriented to be at least 6" from any walls or solid surfaces to ensure proper dissipation of cooled air.

Heater: Ducted With Inlet or Outlet Duct

Room size:
For all closet installations (size smaller than 400 ft³)

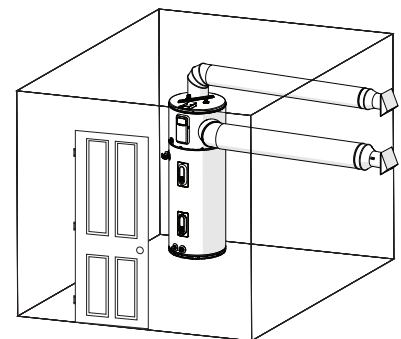
Requirements:
Full louvered door²



Heater: Ducted With Inlet and Outlet Duct

Room size:
Any size room

Requirements:
No additional ventilation needed



MINIMUM CLEARANCES (WITHOUT DUCTING)		
REAR	SIDES	TOP
0"	0"	6"

FOR EASIER SERVICEABILITY		
REAR	SIDES	TOP
6"	6"	6"

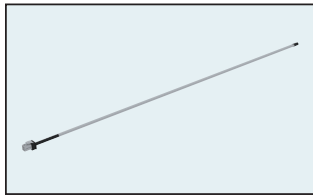
PLEASE NOTE: Heat pump water heater will operate in rooms less than 700 ft³ down to 450 ft³ but at reduced energy efficiency and reduced performance output. Reduced energy efficiency and performance has not been evaluated by Rheem Manufacturing and not recommended for optimal performance of the unit.

¹Minimum louver free opening area required for not ducted room installation application will be 3.25 sq ft.

²Minimum louver free opening area required for ducted closet installation application will be 2.9 sq ft.

Friedrich® Hybrid Electric Heat Pump Water Heater – Residential Utility Accessories

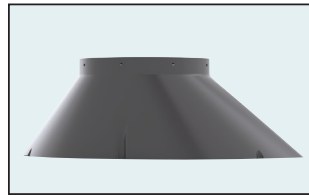
PART NUMBER	DESCRIPTION	USE FOR
AP19134	Leak Sensor	Automatic detection of internal and external leaks
AP20180	Shutoff Valve	Automatic shut off of water supply to unit
SP21105	Inlet Duct Adapter Kit	Allows for ducting to be connected on the top inlet
SP17829	Outlet Duct Adapter Kit	Allows for ducting to be connected to the unit
SP20882	Earthquake Isolation Kit	Installations in seismic regions
SP20883	Vibration Isolation Kit	Installation on non-concrete floors
SP20884	8" Diameter UL Certified Termination Kit	Termination to the outside or to the attic with 8" diameter
SP20885	7" Diameter UL Certified Termination Kit	Termination to the outside or to the attic with 7" diameter
SP20886	6" Diameter UL Certified Termination Kit	Termination to the outside or to the attic with 6" diameter
SP20887	5" Diameter UL Certified Termination Kit	Termination to the outside or to the attic with 5" diameter
SP20888	8" Friedrich Approved Damper Kit	Exhaust only to the outside ducting configuration (no inlet duct)
SP20889	25' Flexible 8" Diameter Duct Kit	For up to 25' of ducting
SP20890	Rigid Elbow Duct Kit	Installation in tight places where space needs to be minimized
FR-80	Little Firefighter Water Heater Front Restraint	Secures the water heater to the wall to prevent damage and water leaks due to severe weather
AP23528	Duct Diverter	Allows for seasonal flexibility in ducting cool exhaust air
UPGRADE KIT		
SP21111	Leak Sensor & Shutoff Valve Kit	Add leak detector and shutoff valve to protect from water damage



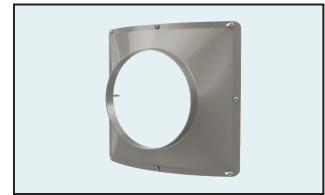
Leak Sensor



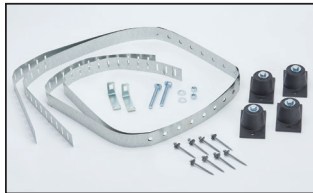
Shutoff Valve



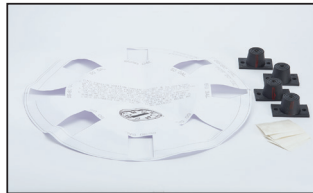
Inlet Duct Adapter Kit



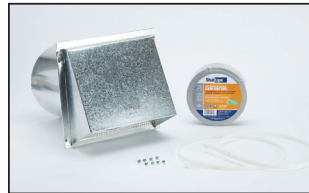
Outlet Duct Adapter Kit



Earthquake Isolation Kit



Vibration Isolation Kit



8" Diameter UL Certified Termination Kit



7" Diameter UL Certified Termination Kit



6" Diameter UL Certified Termination Kit



5" Diameter UL Certified Termination Kit



8" Rheem Approved Damper Kit



25' Flexible 8" Diameter Duct Kit



Rigid Elbow Duct Kit



FR-80



AP23528



UPGRADE KIT (for models without LeakGuard only) - Add leak detector and shutoff valve to protect from water damage

Leak Sensor & Shutoff Valve Kit

In keeping with its policy of continuous progress and product improvement, Friedrich reserves the right to make changes without notice.

Friedrich Water Heating • 1115 Northmeadow Parkway, Suite 100
Roswell, Georgia 30076 • www.friedrich.com