

## Friedrich® Hybrid Electric Heat Pump Water Heater

*Designed for Residential Builders to Maximize Energy Design Rating /HERS Rating*

### Product Highlights

- **3.50 UEF**
- **Meets NEEA Tier 3 Requirements**
- **Integrated Wi-Fi Technology**
- **California Title 24 Compliant (JA13 Ready)**
- **LeakSense™ Accessory Ready**
- **Design Certified to NSF/ANSI 372 (lead control)**
- **10 Year Limited Warranty<sup>1</sup>**

**QUALIFIES  
FOR UTILITY  
REBATES<sup>3</sup>**



**T&P  
Installed**

### Hybrid Electric Heat Pump - Builder

40, 50, 65 and  
80-Gallon Capacities  
208-240 Volt / 1 PH / 24 Amps



LEED Points = 3

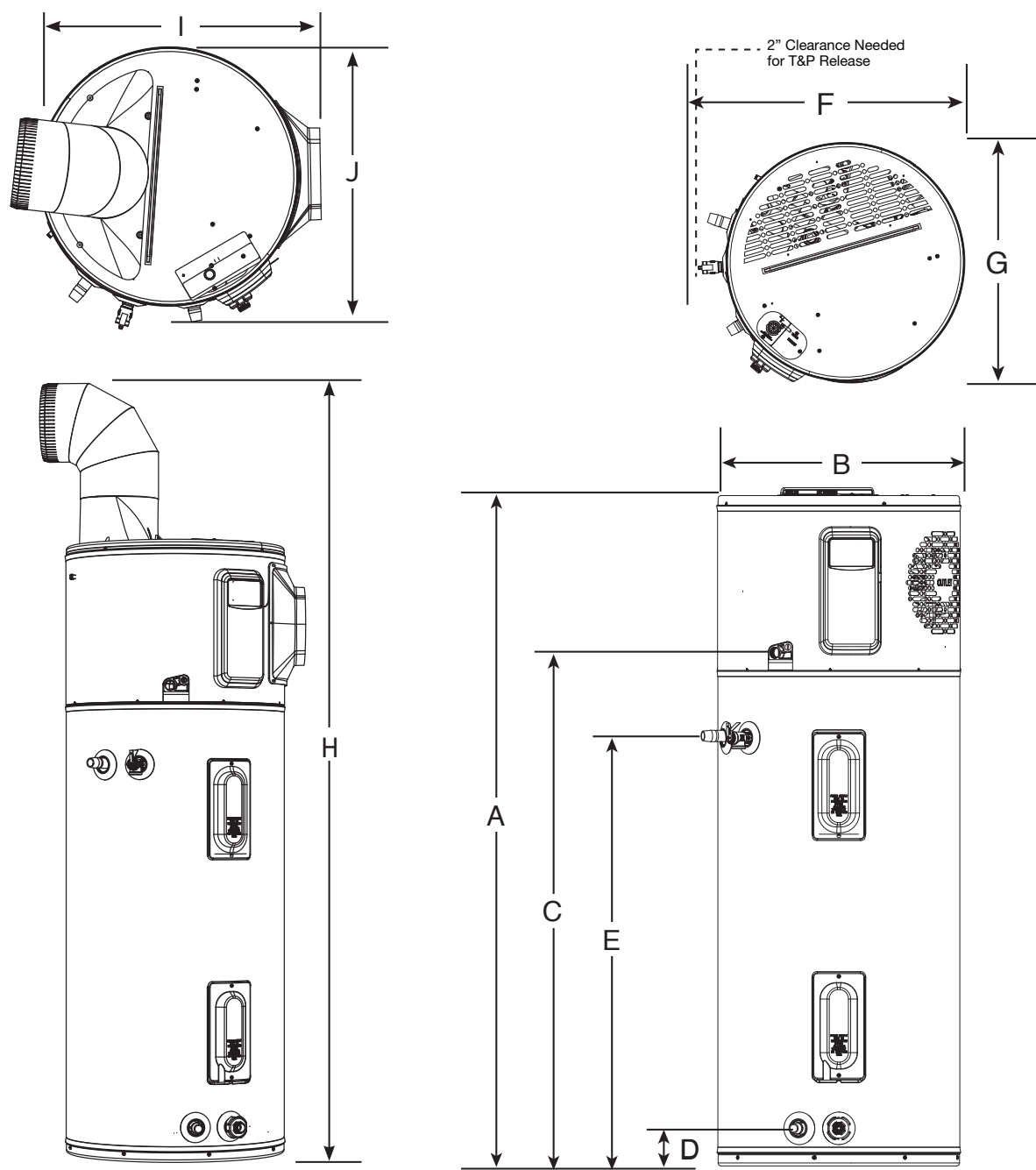
FEATURES & BENEFITS	
High Efficiency	ENERGY STAR® 5.0 certified
	Helps builders earn 45L tax credits
Easy Installation	Easily Ducted – for installation in confined spaces with minimal make up air
	Easy access to side water connection and top electrical junction box; <i>Zero clearance required in the back or side of the unit</i>
	¾" NPT water inlet & outlet; ¾" condensate drain connections
	Dry fire protection
Available EcoNet® Smart Technology	Integrated Wi-Fi Technology <sup>2</sup>
	Energy usage reporting
	Energy saving scheduling and operating modes

DESCRIPTION					ENERGY INFO.	FEATURES			UNIT WT. (LBS.)	APPROX. SHIP WT. (LBS.)
NOMINAL GALLON CAPACITY	RATED GALLON CAPACITY	MODEL NUMBER	MODEL VARIANT	ELECTRIC BREAKER SIZE	UNIFORM ENERGY FACTOR (UEF)	COMPRESSOR BTU/H	UEF FIRST HR. RATING G.P.H.	RECOVERY IN G.P.H. 90° F RISE		
40	36	PROH40 T2 FD310BM	700461	30	3.50	4200	60	26	156	177
50	45	PROH50 T2 FD310BM	700455	30	3.50	4200	67	26	172	193
65	59	PROH65 T2 FD310BM	700456	30	3.50	4200	75	26	225	262
80	72	PROH80 T2 FD310BM	700457	30	3.50	4200	87	26	244	281

Uniform Energy Factor and rated gallon capacity based on Department of Energy (DOE) requirements.

Units meet or exceed ANSI requirements and have been tested according to D.O.E. procedures. Units meet or exceed the energy efficiency requirements of NAECA, ASHRAE standard 90, ICC Code and all state energy efficiency performance criteria.

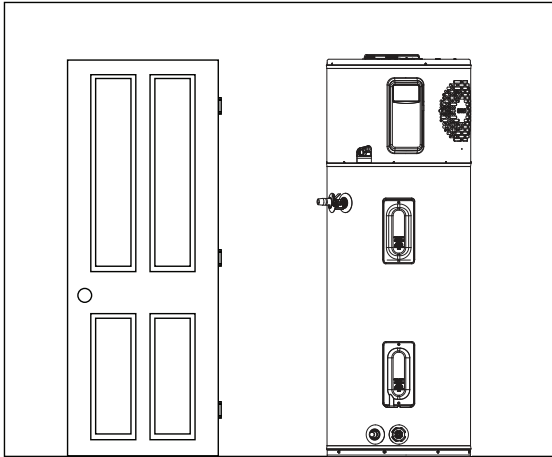
<sup>1</sup> See Residential Warranty Certificate for complete information. <sup>2</sup> Wi-Fi broadband internet connection required. <sup>3</sup> Consult your tax advisor for details on eligibility requirements for any available tax credits. Rebates vary by state.



DESCRIPTION		DIMENSIONS (SHOWN IN INCHES)									
NOMINAL GALLON CAPACITY	MODEL NUMBER	A	B	C	D	E	F	G	H	I	J
40	PROH40 T2 FD310BM	62-5/16	20-1/4	47	3-5/8	39-5/8	25-1/4	20-1/2	78-7/8	22-3/8	21-3/4
50	PROH50 T2 FD310BM	61-3/4	22-1/4	47	3-5/8	39-5/8	27-1/8	22-1/2	78-5/8	24-3/8	23-5/8
65	PROH65 T2 FD310BM	64-3/16	24-1/4	49	3-7/8	42-3/8	29-5/16	24-5/8	81-1/8	26-1/2	25-13/16
80	PROH80 T2 FD310BM	74-3/16	24-1/4	59	3-7/8	52-3/8	29-1/4	24-5/8	91	26-1/2	25-11/16

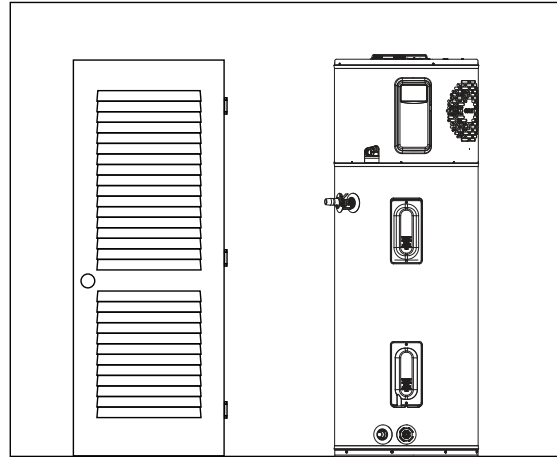
### Heater: Not Ducted

Room size: Larger than 700 ft<sup>3</sup> (e.g. 7' x 10' x 10').  
Requirements: No additional ventilation needed.



### Heater: Not Ducted

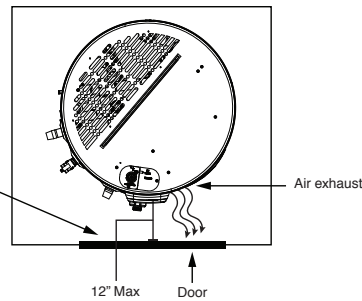
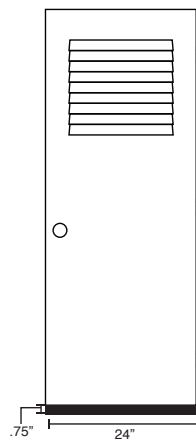
Room size: Smaller than 700 ft<sup>3</sup> (e.g. 7' x 10' x 10').  
Requirements: Full louvered door OR two louvers top and bottom. See below.



### Heater: Not ducted

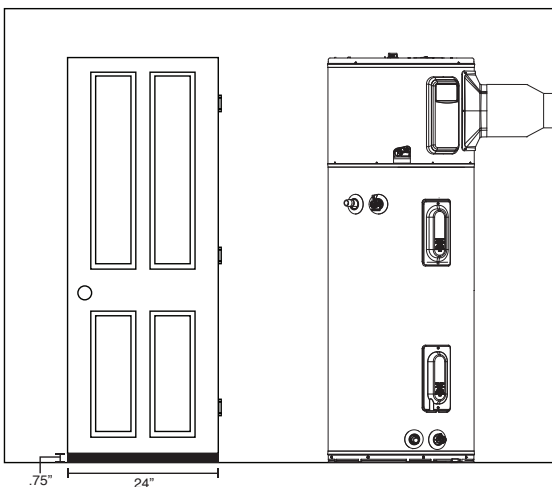
Room: Small Closet

Requirements: \* Air gap under door equal to 18 in<sup>2</sup> (0.75" clearance).  
\* Louver must be located the same height on door as the air exhaust on heater.  
\* Heater air exhaust must be positioned towards louver within one foot of door.



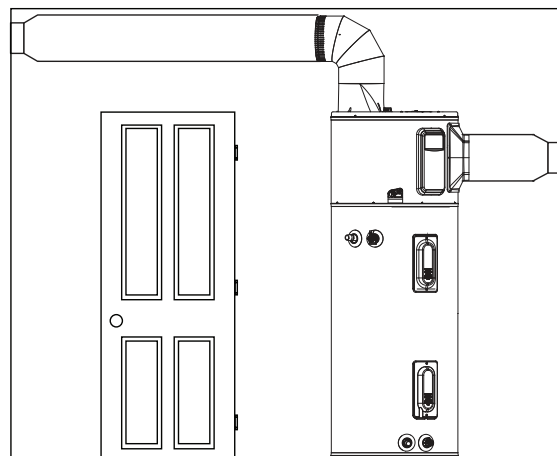
### Heater: Ducted with inlet OR outlet duct

Room size: Any size room  
Requirements: Air gap under door equal to 18 in<sup>2</sup> (0.75" clearance)



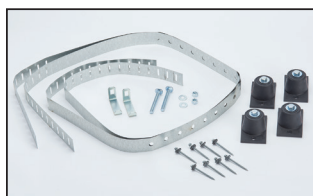
### Heater: Ducted with inlet AND outlet duct

Room size: Any size room  
Requirements: No additional ventilation needed.

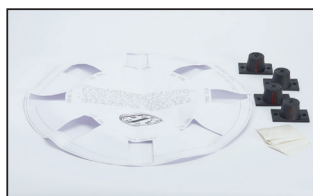


## Hybrid Builder Accessories

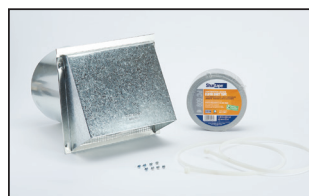
PART NUMBER	DESCRIPTION	USE FOR
SP20882	Earthquake Isolation Kit	Installations in seismic regions
SP20883	Vibration Isolation Kit	Installation on non-concrete floors
SP20884	8" Diameter UL Certified Termination Kit	Termination to the outside or to the attic with 8" diameter
SP20885	7" Diameter UL Certified Termination Kit	Termination to the outside or to the attic with 7" diameter
SP20886	6" Diameter UL Certified Termination Kit	Termination to the outside or to the attic with 6" diameter
SP20887	5" Diameter UL Certified Termination Kit	Termination to the outside or to the attic with 5" diameter
SP20888	8" Friedrich Approved Damper Kit	Exhaust only to the outside ducting configuration (no inlet duct)
SP20889	25' Flexible 8" Diameter Duct Kit	For up to 25' of ducting
SP20890	Rigid Elbow Duct Kit	Installation in tight places where space needs to be minimized
AP17829	Outlet Duct Adapter	Allows for ducting to be connected to the unit
AP19134	Leak Sensor	Automatic detection of internal and external leaks
AP21365	Inlet Duct Adapter	Allows for ducting to be connected on the top inlet



SP20882



SP20883



SP20884



SP20885



SP20886



SP20887



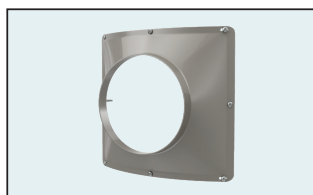
SP20888



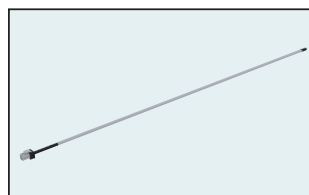
SP20889



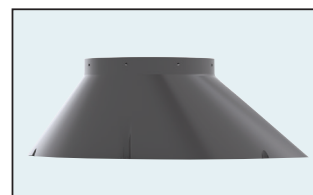
SP20890



AP17829



AP19134



AP21365

*In keeping with its policy of continuous progress and product improvement, Friedrich reserves the right to make changes without notice.*

Friedrich Water Heating • 1115 Northmeadow Parkway, Suite 100  
Roswell, Georgia 30076 • [www.friedrich.com](http://www.friedrich.com)